

BG-FES12G

4K/1080P 12G/6G/3G/HD/SD-SDI Extender

over Single Mode SFP-Type Fiber Optic

User Manual







TABLE OF CONTENTS

Statement	4
Safety Precaution	4
Introduction	5
Features	5
Packing List	6
Technical Specifications	6
Operation Controls and Functions	7
Connection Diagram	8
Application Example	9
Tech Support	10
Warranty	10
Mission Statement	11
Copyright	12



Statement

Please read these instructions carefully before connecting, operating, or configuring this product. Please save this manual for future reference.

Safety Precautions

- To prevent damaging this product, avoid heavy pressure, strong vibration, or immersion during transportation, storage, and installation.
- The housing of this product is made of organic materials. Do not expose to any liquid, gas, or solids which may corrode the shell.
- Do not expose the product to rain or moisture.
- Unplug this device during lightning storms
- Clean only with a soft dry microfiber cloth.
- To prevent the risk of electric shock, do not open the case. Installation and maintenance should only be carried out by qualified technicians.
- Do not use the product beyond the specified temperature, humidity, or power supply specifications.
- This product does not contain parts that can be maintained or repaired by users. Damage caused by dismantling the product without authorization from BZBGear is not covered under the warranty policy.
- Installation and use of this product must strictly comply with local electrical safety standards.
- Only use accessories specified by the manufacture
- Product specifications may be subject to technical upgrades without further notice



Introduction

The BG-FES12G is a 12G/6G/3G/HD/SD-SDI SFP single mode fiber optic extender that is an economical solution. It is designed for transmission of multi-rate SDI video with embedded audio and metadata over single-mode fiber optic cables. The transmitter module receives one 12G/6G/3G/HD/SDI electrical input, perfectly converts SMPTE 292M, SMPTE 259M, SMPTE 424M, SMPTE 2082 or DVBASI electrical SDI signal to single-mode optical SDI signals. The receiver module receives the optical signal and then converts it to an electrical SDI signal. BG-FES12G is immune to pathological patterns (SMPTE RP-198) and does not introduce any flickering. This feature further guarantees the transmission quality over optical fiber.

Both transmitter and receiver provide equalizing and reclocking at the input unit in order to reconstruct the signal for consistent quality. The BG-FES12G is perfect for broadcasting applications including video production, video editing, studio-to-studio, and studio-to-CATV headends. In addition, since transmission of content is inherently secure and immune to outside interference, fiber applications are favored in government, military, and medical environments.

Features

- Enable transmission of digital video signal over optical fiber*
 - up to 10 km (6.25 miles)
- Standard SFP-type fiber optic connector
- Supports the following protocols:
 - SMPTE 259M (270Mbps)
 - SMPTE 259M (360Mbps)
 - SMPTE 292M / HDTV (1.485Gbps and 1.485/1.001Gbps)
 - SMPTE 424M / HDTV (2.97Gbps and 2.97/1.001Gbps)
 - SMPTE 2082-1 / HDTV (5.94Gbps and 5.94/1.001Gbps)
 - SMPTE 2082-2 / HDTV (11.88Gbps and 11.88 /1.001Gbps)
 - DVB ASI (270Mbps)
- Immune to RP-198 pathological patterns
- Automatic reclocking
- One SDI loop out
- 12G/6G/3G/HD/SDI Input signal detection LED

Note:

1. RP-198 is the Pathological Patterns.
2. Fiber type: M = multi-mode; S = single-mode.
3. Maximum transmission length is dependent upon the optics module.



Packing List

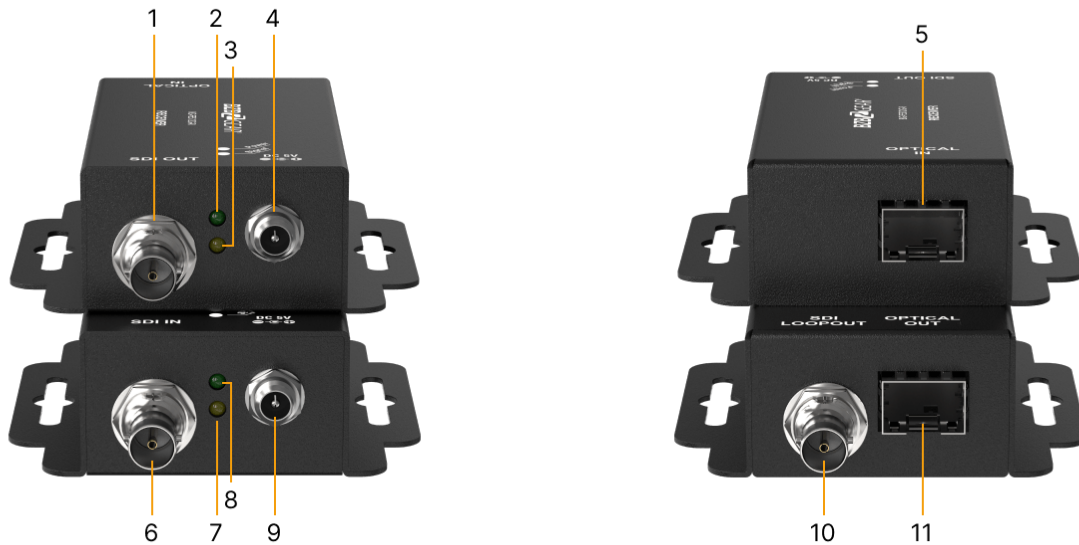
- 1x BG-FES12G
- 2x 5V power adapter
- 1x User Manual
- 1x Quick Start Guide

Technical Specifications

Technical	
SDI standard	SD-SDI/ HD-SDI/ 3G-SDI/ 6G-SDI/12G-SDI
Auto HD/SD-SDI detection	Yes
Supported protocols	SMPTE 259M (270Mbps / 360Mbps), DVB ASI (270Mbps) SMPTE 292M / HDTV (1.485Gbps and 1.485/1.001Gbps) SMPTE 424M / HDTV (2.97Gbps and 2.97/1.001Gbps) SMPTE 2082-1 / HDTV (5.94Gbps and 5.94/1.001Gbps) SMPTE 2082-2 / HDTV (11.88Gbps and 11.88/1.001Gbps)
Data rates	270 / 1483 / 1485 / 2967 / 2970 / 5940 / 11880Mbps
Video bandwidth	[11.88Gbps & 11.88/1.001Gbps]
Video support	[HD] 720p@50/59.94/60, 1035i@50/59.94/60, 1080i@50/59.94/60, 1080p@24/30,1080p@60,1080p@59.94, 4K2K@30, 4K2K@60 [SD] NTSC@59.94Hz, PAL@50Hz
SDI signal type	SMPTE 2082-2, SMPTE 2082-1, SMPTE-424M, SMPTE-292M, SMPTE-259M, DVB-ASI
Auto reclocker mode	Automatic detection: 270Mbps / 1.483Gbps / 1.485Gbps / 2.97Gbps / 2.967Gbps / 5.94Gbps / 5.934Gbps / 11880Gbps / 11868Gbps Automatic bypass: 177Mbps / 360Mbps / 540Mbps
Output impedance	75Ω
Fiber Transmission	10km (6.25mi)
Loop-out	Transmitter: 1 reclocking SDI loop-out Receiver: N/A
Input	Transmitter: 1x BNC [SDI] 1x Optical SFP [SDI] Receiver: 1x Optical SFP [SDI]
Output	Transmitter: 1x BNC [SDI] (optional loop-out) Receiver: 1x BNC [SDI]
BNC connector	75Ω inter-locked socket
Audio support	Yes
PCB Stack-up	4-layer board [impedance control — differential 100Ω ; single 50Ω]
RP-198 pathological patterns	Immune
Optical fiber connector	SFP-type
Mechanical	
Housing	Metal case
Dimensions [L x W x H]	Model: 2.9" x 2.9" x 1.0" [74 x 74 x 26mm] Package: 5.5" x 7.9" x 3" [140 x 200 x 75mm] Carton: 1'5" x 1'4" x 11.8" [420 x 400 x 300mm]
Weight	Model: 7.4 oz [211g] Package: 15.4 oz [440g]
Power supply	5V 2A DC Inter-locked power supply
Power consumption	3 Watts [max]
Operation temperature	32~104°F / 0~40°C
Storage temperature	-4~140°F / -20~60°C
Relative humidity	20~90% RH [no condensation]



Operation Controls and Functions



Receiver Panel

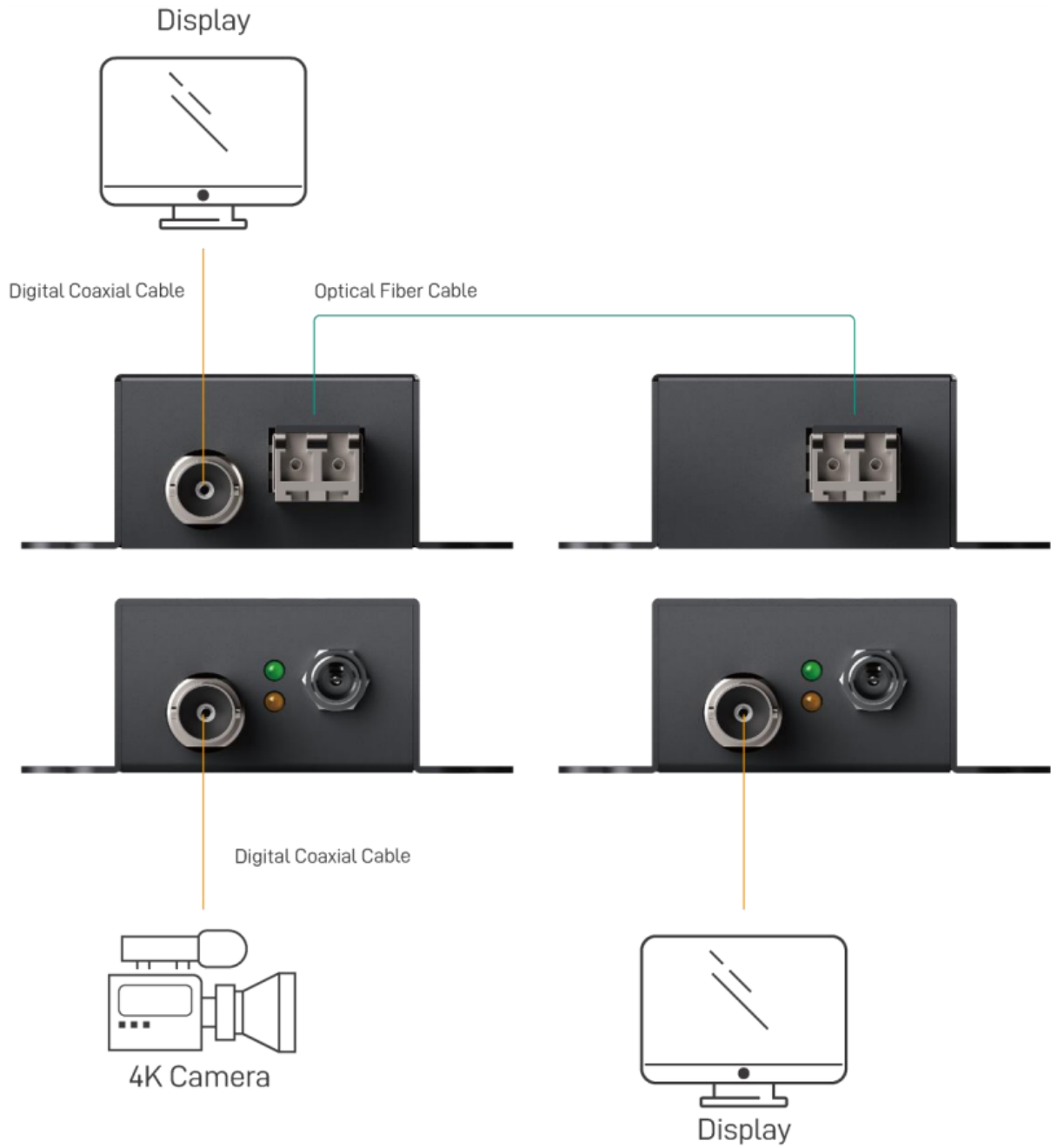
1. **SDI OUT:** 12G/6G/3G/HD/SD-SDI output.
2. **Power LED:** The LED illuminates green when the device is powered.
3. **Signal LED:** Signal indicator illuminates yellow when the receiver establishes a connection to the transmitter.
4. **DC 5V:** 5V DC power jack.
5. **Optical IN:** Optical in from the transmitting unit.

Transmitter Panel

6. **SDI IN:** 12G/6G/3G/HD/SD-SDI input.
7. **Signal LED:** Signal indicator illuminates yellow when the transmitter establishes a connection to the receiver.
8. **Power LED:** The LED illuminates green when the device is powered.
9. **DC 5V:** 5V DC power jack.
10. **SDI Loopout:** 12G/6G/3G/HD/SD-SDI loopout.
11. **Optical OUT:** Optical output to the receiver unit.



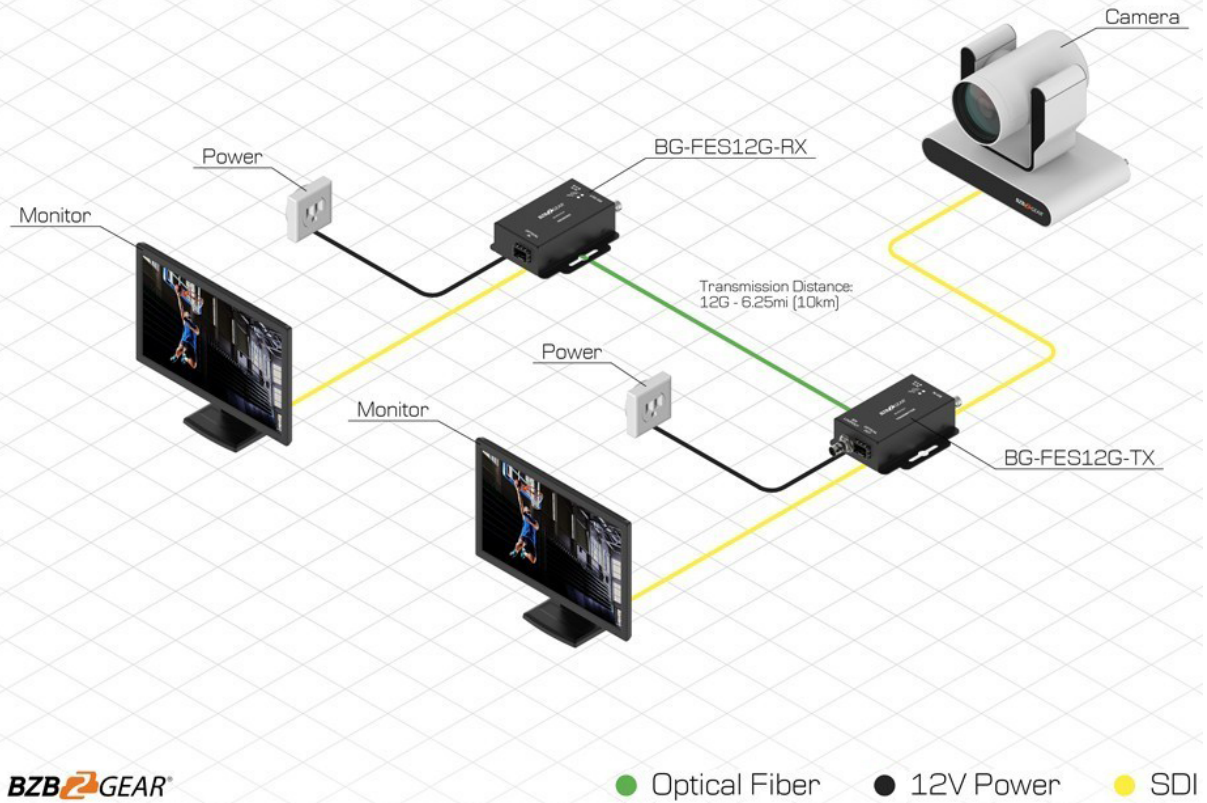
Connection Diagram





Application Example

BG-FES12G
Connection Diagram





Tech Support

Have technical questions? We may have answered them already!

Please visit BZBGear's support page (bzbgear.com/support) for helpful information and tips regarding our products. Here you will find our Knowledge Base (bzbgear.com/knowledge-base) with detailed tutorials, quick start guides, and step-by-step troubleshooting instructions. Or explore our YouTube channel, BZB TV (youtube.com/c/BZBTVchannel), for help setting up, configuring, and other helpful how-to videos about our gear.

Need more in-depth support? Connect with one of our technical specialists directly:

<u>Phone</u>	<u>Email</u>	<u>Live Chat</u>
1.888.499.9906	support@bzbgear.com	bzbgear.com

Warranty

BZBGear Pro AV products and cameras come with a three-year warranty. An extended two-year warranty is available for our cameras upon registration for a total of five years.

For complete warranty information, please visit bzbgear.com/warranty.

For questions, please call 1.888.499.9906 or email support@bzbgear.com.



Mission Statement

BZBGear is a breakthrough manufacturer of high-quality, innovative audiovisual equipment ranging from AVoIP, professional broadcasting, conferencing, home theater, to live streaming solutions. We pride ourselves on unparalleled customer support and services. Our team offers system design consultation, and highly reviewed technical support for all the products in our catalog. BZBGear delivers quality products designed with users in mind.



Copyright

All the contents in this manual and its copyright are owned by BZBGear. No one is allowed to imitate, copy, or translate this manual without BZBGear's permission. This manual contains no guarantee, standpoint expression or other implies in any form. Product specification and information in this manual is for reference only and subject to change without notice.

All rights reserved. No reproducing is allowed without acknowledgement.